



The International  
Travel Writers

---

Alliance

*Making a difference in today's world*



Colorado (See :A place to stay)

---

## The Alliance Bulletin

---

Providing key information in a no-frills format for professionals who travel to write, edit, broadcast or create images.

---

Issue 335 : February 2022

---

# The International Travel Writers Alliance

*Making a difference in today's world*



The Mimosa Festival, Montenegro (see :What's on)

## Join the AllWays Traveller's Journal Facebook group

The International Travel Writers Alliance is inviting journalists and travel industry partners and agencies to join and play an active part in the *AllWays Traveller's Journal* Facebook group.



The group will be pleased to publish a wide range of travel related content with links back to the source.

Individual travellers are also welcome to join and contribute to the group.

<https://www.facebook.com/groups/232642298208116>

- [www.allwaystraveller.com](http://www.allwaystraveller.com)
- Ashley Gibbins at [Ashley@itwalliance.com](mailto:Ashley@itwalliance.com)

### AllWays Traveller



The Alliance uses the group to highlight the features available on AllWays Traveller, its consumer travel magazine.

With over 1,300 travel features and images from Alliance journalists, it is one of the world's most comprehensive online travel magazines.



## Working with the Alliance



## Borrow A Boat

Launched by boating enthusiasts in 2017, *Borrow A Boat* looks to make boating more accessible, affordable, flexible.

It embraces traditional yacht charter companies and peer-to-peer yacht charter, which enables boat owners to offset the high costs of boat ownership by reducing maintenance costs and marina fees, whilst offering consumers more affordable and flexible boating.

There are over 35,000 boat rentals and yacht charters available in some 65 countries including Europe, the Mediterranean, Caribbean, North America and South East Asia.

*Borrow A Boat* facilitates boat rental from just £40 per day, sailing yachts from £1,000 per week and luxury motorboats and superyachts, under *Borrow A Boat Plus*, from approximately £10,000 per week.

Boats of all types are available for rental, including sailboats, motorboats, riverboats, RIBs, catamarans, gulets, superyachts and luxury yacht charters.

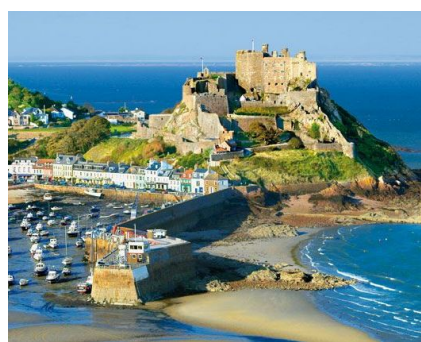
Customers can choose a boat with or without a skipper, depending on their sailing experience.

- [www.borrowaboat.com](http://www.borrowaboat.com)
- Rosie Crass at [rosie.crass@rooster.co.uk](mailto:rosie.crass@rooster.co.uk)



# Jersey

Jersey, the largest of the Channel Islands, is located between England and France and enjoys a mix of Anglo-French culture.



It has 30 beaches on 12 miles of coastline and one of Europe's largest oyster beds.

## The Moorings Hotel

The Moorings Hotel, which is located at Gorey Pier on the island's west coast has undergone a major refurbishment.

It offers a locally sourced rotating menu, including Grouville oysters and Jersey lobster.

[www.themooringshotel.com](http://www.themooringshotel.com)



## Tea Field Cottages

Tea Field Cottages, which are found in one of Jersey's four tea plantations, date back to 1731.

They are located in rural St. Lawrence in the centre of the island,

[www.teafieldcottages.com](http://www.teafieldcottages.com)

## Premier Inn, St. Helier

The new Premier Inn in Merchant's Square St. Helier will open in February 2022.



It will have a pedestrian walkway linking the Millennium Town Park and Halkett Place.

[www.premierinn.com](http://www.premierinn.com)

## The Beach Club

Randall's Jersey is opening the Beach Club, on St. Brelade's Bay.

It will offer a relaxed beach side club spot for food and sunset cocktails.

[www.randalls-jersey.co.uk/the-beach-club](http://www.randalls-jersey.co.uk/the-beach-club)



## Jersey

(cont)



Jersey Seafaris



### Bohemia

Bohemia Restaurant, located within *The Club Hotel & Spa in St. Helier*, has retained its Michelin-star for a 17th year.

Bohemia, which remains the only restaurant in Jersey to hold a Michelin-star, has also been rated in the top 1000 Restaurants in the World by LA LISTE 2022.

[www.bohemiajersey.com](http://www.bohemiajersey.com)

- [www.jersey.com](http://www.jersey.com)
- Lauren Fisher at [lauren.fisher@onegreenbean.com](mailto:lauren.fisher@onegreenbean.com)

### Jersey Fine Tea Tour

Jersey Fine Tea offers a 2.5-hour exploration of the island's tea history, including a visit to one of its three gardens where visitors can enjoy a walk in the tea fields before learning more about the intricacies of tea-making at the processing site.

[www.jerseyfinetea.com](http://www.jerseyfinetea.com)



### Jersey Seafaris Picnic Packages

Combining rib and boat tours with locally produced lunches, Jersey Seafaris now provides picnics as part of their private charter trips.

[www.jerseyseafaris.com/charter-picnic](http://www.jerseyseafaris.com/charter-picnic)

## News



## Arctic glamping, Swedish Lapland

**A new glamping experience combines the tradition of a native Sami Lavvu (teepee) with the comfort of a luxury cabin in an Arctic nature reserve in the Laponia World Heritage Site.**

The new accommodation is part of a Sami Experience adventure by Off the Map Travel that will see visitors spend three nights on traditional Sami site in Swedish Lapland.

The site is 100 miles above the Arctic circle, with each Sami Lavvu sleeping two and are furnished with double beds, stoves, furnishings and a private en suite bathroom.

During a stay, there is the chance to learn how to prepare and cook dishes based on the Sami cuisine.

The Sápmi Nature Camp works to create sustainable, off grid, personal Sami experiences that celebrate the native Lapland culture, nature and wellness.

The itinerary also takes in learning about the Sami culture, a Sami guided skiing tour, the chance to meet the reindeer herdsman and his family, join a wildlife safari to spot moose, and head out onto a frozen river.

Available from January 2022, the new accommodation will be available throughout the year for guests to enjoy the Arctic nature from the dark winter nights and Northern Lights, through to the midnight sun in the summer.



- [www.offthemap.travel/the-sapmi-experience](http://www.offthemap.travel/the-sapmi-experience)
- Mark Hayward at [mark@SwayCommunications.co.uk](mailto:mark@SwayCommunications.co.uk)



# Uber Boat by Thames Clippers', London

UK

Uber Boat by Thames Clippers will introduce the UK's first hybrid high speed passenger ferries to London in autumn 2022 and spring 2023.



The two new vessels, being built at Wight Shipyard on the Isle of Wight, will operate solely on battery power while transporting commuters and sightseers between Tower and Battersea Power Station piers.

They will use biofuelled power outside of central London and use excess power from the biofuelled engines to re-charge their batteries for the central London stretch.

- [www.uberboatbythamesclippers.com](http://www.uberboatbythamesclippers.com)
- Madeline Schilg at [madeline.schilg@sirencomms.com](mailto:madeline.schilg@sirencomms.com)



Uber Boat by Thames Clippers is London's River Bus service.

Services run at 10 to 20 minute intervals between key London piers including North Greenwich for The O2; Greenwich; Canary Wharf; the Tower; London Bridge City; Westminster and the London Eye (Waterloo).

# Byway certified as a B Corporation

Sustainable travel company Byway has been certified as a B Corporation.



Byway joins 2,700 other companies worldwide that meet the highest standards of verified social and environmental performance, public transparency, and legal accountability to balance profit and purpose.

Certified B Corps look after their staff, work toward a more inclusive supply chain, and use the power of business to solve social and environmental issues.

Certification provides consumers with a means to ensure that they are supporting socially and environmentally responsible businesses.

Byway is a slow travel holiday operator that offers multi-stop journeys by train, bus and boat. Trips are 100% flight free and accommodation locally owned and operated.

Byway is a founding signatory of the Glasgow Declaration for climate action in tourism and a member of Tourism Declares a Climate Emergency.

- [www.byway.travel](http://www.byway.travel) and [www.bcorporation.net/directory/byway](http://www.bcorporation.net/directory/byway)
- Kate Faulkner at [katefaulkner@kfcomms.com](mailto:katefaulkner@kfcomms.com)

# Ambassador Cruise Line

The Ambassador Cruise Line, the first British line launched since 2010, will take its inaugural voyage to Hamburg in April 2022.



Cruises after that include :

## **Best of the British Isles** (depart) 26 May 2022

To celebrate Queen Elizabeth II's Platinum Jubilee, this 12-night cruise will offer the chance to visit Britain's offshore islands including Orkney, Scilly and Guernsey.

On board there will be royal historians, lectures, and a Jubilee dinner.

[www.ambassadorcruise.com/cruise/a12207-round-britain-queens-platinum-jubilee-celebration/](http://www.ambassadorcruise.com/cruise/a12207-round-britain-queens-platinum-jubilee-celebration/)

## **Norway's Fjordland** 16 October 2022

This seven-night cruise will take in Norwegian fjords, with highlights including Haugesund, formerly the royal seat of the Viking kings.

This typically Scandinavian town is set amid the fjords and waterfalls, with colourful houses and an historic waterfront.

[www.ambassadorcruise.com/cruise/a1217-autumn-fjordland/](http://www.ambassadorcruise.com/cruise/a1217-autumn-fjordland/)

## **Baltic Treasures and St Petersburg** 23 July 2022

This 14-night cruise journeys through the Baltic Sea to, St. Petersburg, with its array of ornate churches and cathedrals, opulent palaces that once housed Tsars and, the magnificent Hermitage Museum.

The Baltics are also home to medieval cities and cosmopolitan capitals, with the cruise taking in Copenhagen, Stockholm and Tallinn, Estonia.

[www.ambassadorcruise.com/cruise/a1211-baltic-treasures-st-petersburg](http://www.ambassadorcruise.com/cruise/a1211-baltic-treasures-st-petersburg)

## **A Caribbean Cocktail**

5 January, 2023

A 42-night voyage to the Caribbean that visits Barbados, St. Vincent & the Grenadines, Jamaica, Turks & Caicos, Tortola (BVI) and Antigua.

[www.ambassadorcruise.com/cruise/a12301-cuba-treasures-of-the-caribbean/](http://www.ambassadorcruise.com/cruise/a12301-cuba-treasures-of-the-caribbean/)

## **Iceland and the Northern Lights** 23 March, 2023

The Aurora Borealis is one of the natural spectacles and Ambassador will take an 11-night cruise Iceland, stopping at the cosmopolitan capital of Reykjavik.

Ambience will visit Invergordon and the remote and the archipelagos of Orkney and the Faroe Islands.

[www.ambassadorcruise.com/cruise/a12304-icelands-land-of-the-northern-lights](http://www.ambassadorcruise.com/cruise/a12304-icelands-land-of-the-northern-lights)

- [www.ambassadorcruise.com](http://www.ambassadorcruise.com)
- Alex Keelan at [alex@wearelotus.co.uk](mailto:alex@wearelotus.co.uk)



## What's on



## Hakata Dontaku Festival - Fukuoka Prefecture

Japan

Annual (3 and 4 May 2022)

**Japan's largest Golden Week festival is held annually in Fukuoka, with 30,000 participants and over two million spectators. The celebration, which began in the Heian period, is over 800 years old.**

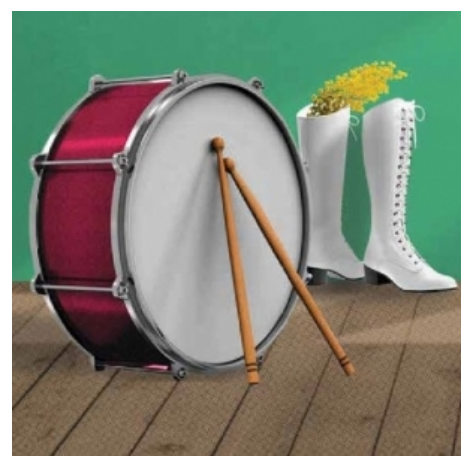
As well as parades, around 30 stages are set up across the city that each host a wide variety of performances, along with food, drink and game stalls.

- [www.visit-kyushu.com/en](http://www.visit-kyushu.com/en)
- Rachel Santa Cruz at [rsantacruz@blackdiamond.co.uk](mailto:rsantacruz@blackdiamond.co.uk)

# The Mimosa Festival, Herceg Novi, Montenegro

11 February to 21 March 2022

Montenegro is a Balkan country with rugged mountains, medieval villages and a narrow strip of beaches along the Adriatic.



The Bay of Kotor, resembling a fjord, is dotted with coastal churches and fortified towns such as Kotor and Herceg Novi.

Durmitor National Park, home to bears and wolves, encompasses limestone peaks, glacial lakes and 1,300m-deep Tara River Canyon.

Marking the official start of spring, the Mimosa Festival, also known as the festival of flowers, is held annually in the coastal town of Herceg Novi.

Highlighting the yellow blooms it has marching majorettes, concerts and sports events that celebrates the arrival of spring.

The festival brings the community together through a series of free events and regional cuisine.

Locals believe the Mimosa flower represents rebirth, restoration, and new growth for the year ahead.

- [www.visit-montenegro.com](http://www.visit-montenegro.com)
- Rachel Santa Cruz at [rsantacruz@blackdiamond.co.uk](mailto:rsantacruz@blackdiamond.co.uk)

# Modernism Week, Greater Palm Springs, California

USA

Annual (17 to 27 February 2022)

The 11-day Modernism Week festival features more than 350 events, including the *Palm Springs Modernism Show & Sale*, tours of iconic homes in more than 30 neighbourhoods, and the *Signature Home Tour* on both weekends.



Also offered are architectural walking, biking and double-decker bus tours, tours of the historic Annenberg Estate at Sunnylands, a classic car show, garden tours, nightly parties, and a special series of compelling and informative talks.

- [www.modernismweek.com](http://www.modernismweek.com) and [www.visitgreaterpalmsprings.com](http://www.visitgreaterpalmsprings.com)
- Rachel Santa Cruz at [rsantacruz@blackdiamond.co.uk](mailto:rsantacruz@blackdiamond.co.uk)



# New exhibition on Anne Boleyn at Hever Castle, Kent

UK  
Hever Castle the childhood home of Anne Boleyn, Hever Castle, will launch the first of a series of exhibitions detailing the life and times of Anne Boleyn on 4 March 2022.



This will be 500 years to the day of her first recorded appearance at English court in 1522.

*Becoming Anne: Connections, Culture, Court*, which runs until November 2022, will explore the factors that moulded Anne's character and also the rise of the Boleyn family.

Anne's early life at Hever Castle will be charted along with her relationship with her family, her education at Hever, in the Netherlands and at the French court.

The exhibition will end with her placement in the service of Queen Catherine of Aragon, Henry VIII's first wife.

- [www.hevercastle.co.uk](http://www.hevercastle.co.uk)
- Helen Francis at [hfrancis@hevercastle.co.uk](mailto:hfrancis@hevercastle.co.uk)

There will be a chance to see a recreation of the Chateau Vert pageant set in which Anne made her dazzling debut at the English court in 1522.

*Becoming Anne: Connections, Culture, Court* will be included as part of Castle admission.

Hever Castle, in the village of Hever, Kent and 30 miles from London, began as a country house, built in the 13th century.

From 1462 to 1539, it was the seat of the Boleyn family.

# Seattle Scotch & Beer Fest, Washington

USA  
Annual (15 and 16 April 2022)

**The Seattle Scotch & Beer Fest is the region's biggest spring beer festival combining craft beer, Scotch, spirits, and cocktails.**



Taking place in Seattle's indie Fremont neighbourhood, visitors can enjoy authentic Scotch tasting, Tequila and Mezcal tasting, Whisky Seminars, craft cocktails and 50 seasonal and special release beers, ciders and seltzers from brewers along the West Coast.

- [www.scotchbeerfest.com](http://www.scotchbeerfest.com) and [www.visitseattle.org](http://www.visitseattle.org)
- Rachel Santa Cruz at [rsantacruz@blackdiamond.co.uk](mailto:rsantacruz@blackdiamond.co.uk)

# The Setouchi Art Triennale, Seto Inland Sea

Japan

April to November 2022

Every three years, Japan's Setouchi islands host an art festival that attracts artists and visitors from around the world.

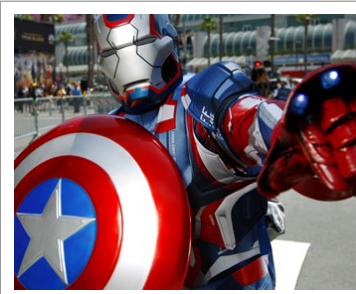
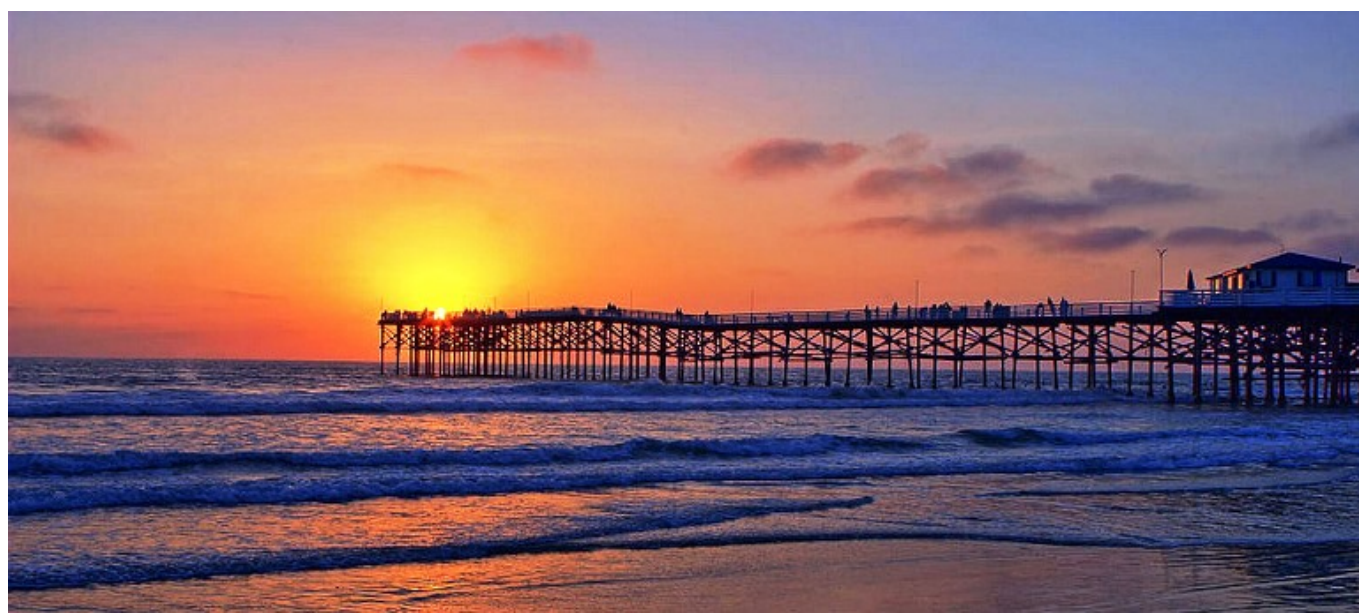


Spread among multiple islands, the eight-month art fair offers a wealth of art and culture to discover. Visitors to the region will find a laid back, slow paced rural atmosphere in the islands' villages and natural beauty.

- [www.setouchi-artfest.jp/en/](http://www.setouchi-artfest.jp/en/) and [www.japan.travel/en](http://www.japan.travel/en)
- Rachel Santa Cruz at [rsantacruz@blackdiamond.co.uk](mailto:rsantacruz@blackdiamond.co.uk)



# A reason to write about



## San Diego, California

USA

**San Diego is a Californian city on the Pacific coast known for its beaches, parks and warm climate.**

Balboa Park has the renowned San Diego Zoo, as well as numerous art galleries, artist studios, museums and gardens.

The harbour is base to a large active naval fleet, with the USS Midway, an aircraft-carrier-turned-museum, open to the public.

### Sesame Place

Sesame Place, a new Sesame Street theme and water park will open in March 2022.

Families will be able to enjoy seven Sesame Street-themed rides, an interactive musical play area, and 11 water attractions including one of the largest wave pools in southern California.

The park will also have an interactive Sesame Street neighbourhood, where the character parade will take place daily.

[www.sesameplace.com/san-diego](http://www.sesameplace.com/san-diego)

### The Museum of Contemporary Art San Diego

The Museum of Contemporary Art San Diego (MCASD) in La Jolla will reopen in April after a major expansion project.

Since 1941, MCASD has evolved into an iconic San Diego cultural institution and internationally renowned visual arts organisation.

The expansion will double the building's size, allowing for more exhibition space, and include new floor-to-ceiling windows.

These will flood the galleries with natural lights and offer spectacular coastal views.

[www.mcasd.org](http://www.mcasd.org)

### Comic-Con

Following a first phase opening in November 2021, the Comic-Con Museum will fully open in Balboa Park in July 2022.

Museum-goers can expect rotating exhibits, an education centre, 4K video theatre, and gift shop filled with comics, graphic novels, branded souvenirs and more.

[www.comic-con.org/museum](http://www.comic-con.org/museum)

# San Diego

(cont)



Coronado

## New hotels

### The Cormorant Boutique Hotel

Formerly the La Jolla Inn, the Cormorant Boutique Hotel is completing an extensive, three-year renovation that brings a 'mid-century modern aesthetic' to the heart of La Jolla.

Named after the seaside town's Cormorant birds, the hotel includes 26 nautical inspired guest rooms with views of the Pacific Ocean and a new rooftop terrace bar.

[www.cormorantlajolla.com](http://www.cormorantlajolla.com)

### Hotel del Coronado

The Hotel del Coronado will complete a \$400m, three-year refurbishment in summer 2022.

This will see an updated roof terrace, new seafood restaurant, renovated poolside guest rooms, new state-of-the-art fitness centre, and refurbished Ice House Museum which educates guests on the hotel's history and heritage.

[www.hoteldel.com](http://www.hoteldel.com)

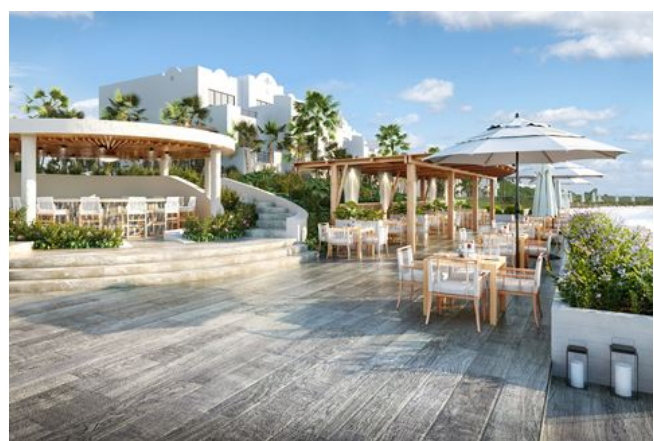
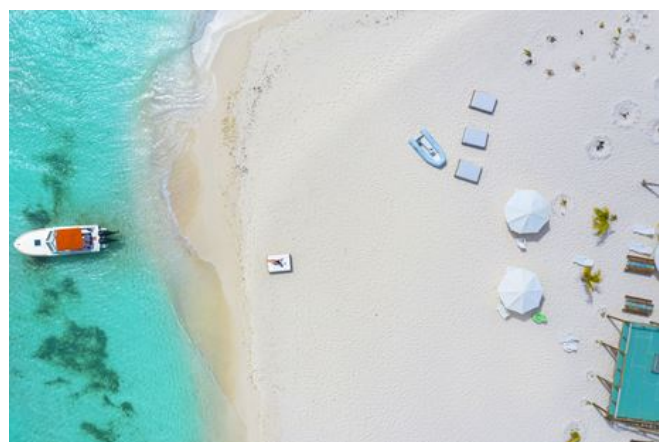


- [www.sandiego.org](http://www.sandiego.org)
- Julia Thomas at [jthomas@blackdiamond.co.uk](mailto:jthomas@blackdiamond.co.uk)



# Anguilla

Anguilla, a British Overseas Territory in the Eastern Caribbean, comprises a small main island and several offshore islets.



It offers long sandy stretches of beach like Rendezvous Bay, which has views of the neighbouring Saint Martin island.

Protected areas include Big Spring Cave, known for its prehistoric petroglyphs, and East End Pond, a wildlife conservation site.

## New accommodation

The Aurora Anguilla Resort & Golf Club, which is a 'reimagining' of the previous Reef and CuisinArt, opened in December 2021.

The 300-acre resort offers 178 suites, seven bespoke restaurants and bars, an extensive spa and an 18-hole Championship golf course designed by Greg Norman.

[www.auroraanguilla.com](http://www.auroraanguilla.com)

[www.arawakbeachclub.com](http://www.arawakbeachclub.com)

Refurbished and reopened, the Arawak Beach Club, close to the village of Island Harbour, has self-contained studios or cottages.

The Cottage at Meads Bay is a new-build, private, three-bed villa on one of the island's most spectacular beaches and close to popular restaurants including Blanchards, Jacala and Ocean Echo.

[www.thecottageonmeadsbay.com](http://www.thecottageonmeadsbay.com)

## New activity and wellness

Cap Juluca, A Belmond Hotel offers fishing trip to Maundays Bay with a local fisherman and a Volkswagen campervan tour of the island's beaches with a gourmet picnic lunch accompaniment.

[www.belmond.com/ideas/articles/belmond-cap-juluca](http://www.belmond.com/ideas/articles/belmond-cap-juluca)

Malliouhana, part of the Auberge Resorts Collection, offers a collection of massages, facials, wraps and other island inspired treatments, using fresh, local botanicals known for their healing properties.

[www.aubergeresorts.com/malliouhana](http://www.aubergeresorts.com/malliouhana)

## New dining

Cap Juluca, A Belmond Hotel, now has a seafront Peruvian restaurant, the only one of its kind on the island.

[www.belmond.com/hotels/north-america/caribbean/anguilla/belmond-cap-juluca/dining](http://www.belmond.com/hotels/north-america/caribbean/anguilla/belmond-cap-juluca/dining)

- [www.ivisitanguilla.com](http://www.ivisitanguilla.com)
- Laura Marfell-Williams at [laura@hamilton-pr.com](mailto:laura@hamilton-pr.com)

# Strawberry Hill & Garden, Twickenham, London

UK

Created by renowned writer Horace Walpole (1717-1797), Strawberry Hill is Britain's finest example of domestic Georgian Gothic revival architecture



The House and its garden has been open to visitors for over 250 years.

Horace Walpole was a pivotal figure in 18th-century society, literature, art and architecture and was the third son of Sir Robert Walpole, Britain's first Prime Minister.

From 1739 to 1741, Walpole embarked on a Grand Tour and European influences can be seen in the design of Strawberry Hill House and the works that formed its vast collection of treasures.

He was author of the world's first Gothic novel, *The Castle of Otranto*.

Strawberry Hill's 18th-century garden is one of the earliest in the English naturalistic style, with Walpole's 1780 essay on garden design one of the most influential pieces of writing on the English landscape garden.

## In Focus displays

Strawberry Hill House & Garden will stage three *In Focus* displays for 2022, featuring objects and artworks that help tell the story of Strawberry Hill and its inhabitants.

### The Grand Tour, the two Horaces and the Court of Florence (1740-1786)

24 March to 24 July 2022

This display is dedicated to the Italian Grand Tour, in particular the friendship between Horace Walpole (and the British Envoy to Florence, Horace Mann).



## Pollock Theatres

7 July to 8 October 2022

This exhibition will display a series of early 19th-century Victorian Toy Theatres from the historic collection of the Pollock's Toy Museum (today part of the Benjamin Pollock's Toy Shop, one of the oldest toy shops in London).

Toy theatres were popular children's playthings until their decline at the end of the 19th-century. Miniature stages, characters, scenery and props were printed onto paper from copper plates.

## The Tudors and the lost jewelled dagger of Henry VIII

29 September 2022 to 1 January 2023

Horace Walpole was also fascinated by the Tudors and at Strawberry Hill he consecrated an entire room to them and called it *The Holbein Chamber*.

This room originally contained works by or after Holbein, as well as those objects which Walpole associated with the Tudors.

These include the Cardinal Wolsey hat, portraits of the members of the court of Henry VIII and the king's dagger.

- [www.strawberryhillhouse.org.uk](http://www.strawberryhillhouse.org.uk)
- Tracy Jones at [tracy@brera-london.com](mailto:tracy@brera-london.com)



# Calvià's, Mallorca

Spain

The historic town of Calvià is located in the foothills of the Tramuntana Mountain range on the southwest of Mallorca.



The traditional ochre coloured houses sit amongst carob and almond trees.

The region of Calvià has a history and heritage that stretches from the Copper Age to the arrival of tourism since the 1960s.

At Calvià's archeological sites, visitors can discover how Majorca's ancestors lived under the rule of the Romans and the Byzantines.

Calvià has 116 documented sites including :

## **Naveta Alemany in Magaluf**

One of Calvià's most significant Bronze Age findings is Naveta Alemany in Magaluf.

The site shows evidence of a shack made out of clay and reeds and is the largest ever found in Majorca. Archaeologists found evidence of fires, animal bones, ceramics and bronze tools.

## **Puig de sa Morisca Archaeological Park**

The 45 hectares *Puig de sa Morisca* Archaeological Park in Santa Ponça is one of the most important archaeological sites.

- [www.visitcalvia.org/en](http://www.visitcalvia.org/en)
- Amy Layton at [pr@representationplus.co.uk](mailto:pr@representationplus.co.uk)

The park consists of architectural ruins including an acropolis, towers, rooms, remains of walls, defensive structures, caves and shelters.

It was built in the 6th century BC and finally abandoned in 1229 with the conquest of the island by King James I.

## **Galatzó Public Estate**

There are four hiking routes through the Galatzó Public Estate with access to the archaeological sites whilst taking in the Serra de Tramuntana Mountain range, a UNESCO World Heritage Site.

At the peak of the S'Esclop route, the protected ruins of the house of 19th Century French scientist Aragó can be explored.

## **Galatzó Farmhouse**

The Galatzó Farmhouse dates back to 1283 and features an old oil press and mill with courtyard gardens

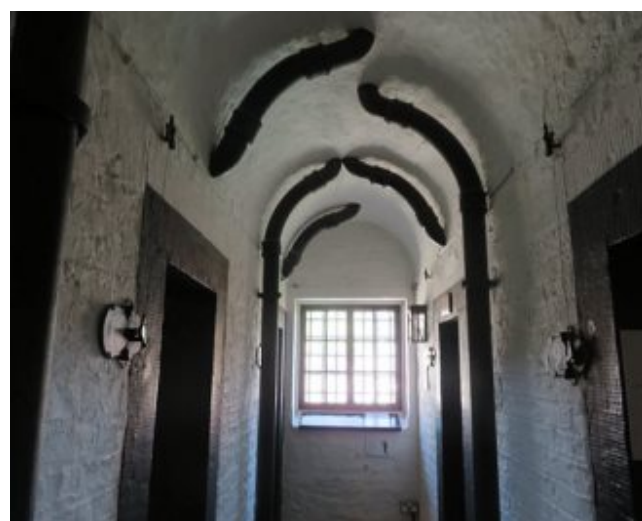




# The Ripon Museums, Yorkshire

UK

The cathedral city of Ripon, North Yorkshire, has three museums in original historic buildings, that tell the story of poverty, crime and punishment in Yorkshire.



## The Workhouse Museum

The grim atmosphere of the Workhouse Museum has been carefully maintained in order to give visitors a sense of what life in a Victorian Workhouse could have been.

A workhouse has stood on the museum site since 1776, with the present building completed in 1855. Visitors can take in the *Vagrant's Block*, with its cells and bathing room along with the *Main Block* with the Master's study and dining room, pantry, classroom and inmates' dining hall.

There is also the original Workhouse Kitchen Garden, which would have been tended by the inmates with the produce used to feed them. Today the museum's team use 1860s gardening techniques to cultivate heritage crops.

- [www.riponmuseums.co.uk](http://www.riponmuseums.co.uk), [www.visitharrogate.co.uk/explore/ripon](http://www.visitharrogate.co.uk/explore/ripon) and [www.yorkshire.com](http://www.yorkshire.com)
- Emma Parkes at [emma.parkes@grouptravelworld.com](mailto:emma.parkes@grouptravelworld.com)

## The Prison & Police Museum

The Prison & Police Museum is housed in the former Ripon Liberty Prison, which later became Ripon Police Station.

Visitors walk through the gate into the prison yard, with its pillory and whipping post, into the museum.

The galleries are housed in the original prison cells, with their white-washed walls and barred windows.

## The Courthouse Museum

This Georgian Courthouse remains virtually unchanged since it was built in 1830.

After Quarter Sessions ceased in 1953, the court continued as a Magistrates Court until it closed in 1998.



## A place to stay



## The Stanley Hotel in Estes Park, Colorado

USA

Named one of the best horror tales, Stephen King's 'The Shining' celebrates its 45th anniversary this year.



While living in nearby Boulder, the hotel was recommended to King and his wife but, on arrival, they found they were the only guests staying that night.

This created an eerie feel which served as inspiration for the Overlook Hotel.

Located in the Rocky Mountains, The Stanley Hotel was built in 1909 and still retains its history, attracting a large number of The Shining fans each year.

The interior has been renovated over time but still has a turn-of-the-century feel and is said to have 'high spirited activity.'

The nearby mountain village of Estes Park has Elkhorn Avenue and Moraine Avenue, with more than 200 shops, restaurants and galleries.

Estes Park is also the gateway to Rocky Mountain National Park that has mountains, alpine lakes and a wide range of wildlife in various climates, from green forests to snowy mountaintops.

It offers opportunities for hiking, cycling, camping, rock climbing and water sports.

- [www.stanleyhotel.com](http://www.stanleyhotel.com), [www.nps.gov/romo](http://www.nps.gov/romo), [www.colorado.com](http://www.colorado.com)
- Shauna Hill at [shauna@blackdiamond.co.uk](mailto:shauna@blackdiamond.co.uk)

# La Fosse, Dorset

UK

La Fosse is a restaurant with rooms in the Dorset village of Cranbourne.



It is situated among the counties rolling hills and close to the New Forest National Park and with historic houses and gardens in the surrounding area.

The south-west English county of Dorset itself is known for the Jurassic Coast, a long stretch on the English Channel where the cliffs contain many fossils.

Two prominent natural landmarks are Durdle Door, an ancient stone arch, and the layered cliffs at nearby Lulworth Cove.

The towns of Poole, Weymouth and Swanage are popular for their sandy beaches.

La Fosse is housed in a Victorian property and offers six bedrooms named after local cheeses.

It is run by Chef Mark Hartstone and his wife Emmanuelle, with *The Restaurant at La Fosse*

Mark cooks by himself and cooks to order using locally sourced locally produce and cooking with the seasons.

Mark initially trained as a Geologist and Petroleum Engineer before 'having an epiphany' and deciding to follow his passion of cooking.

This led to his working in the kitchens of some of Europe's top chefs, reaching the finals in four national chef competitions and winning the National Seafood Recipe Challenge



- [www.la-fosse.com](http://www.la-fosse.com)
- Pippa Gibb at [Pippa@inthebagpr.co.uk](mailto:Pippa@inthebagpr.co.uk)



# The Langham, Gold Coast

Australia

The Langham, Gold Coast will open in 2022 with 169 rooms and suites on the beachfront in Surfers Paradise.

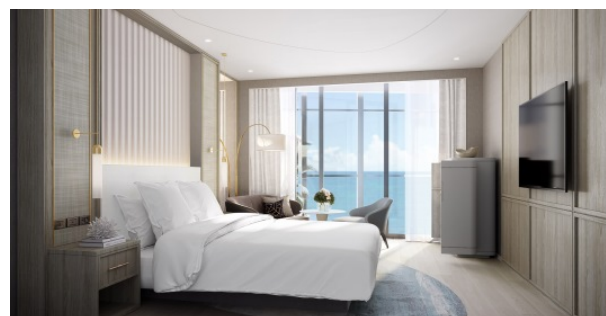


The Langham, Gold Coast is located between the ground and 20th floors of the Jewel are with its three colossal quartz crystals design.

The colour palette of the hotel interiors will reflect a coast meets city theme, with a blend of teal, azure and tan shades derived from the local flora and fauna.

The Langham Hospitality Group has two other hotels in its Australian portfolio in *The Langham, Melbourne* and *Langham Sydney*.

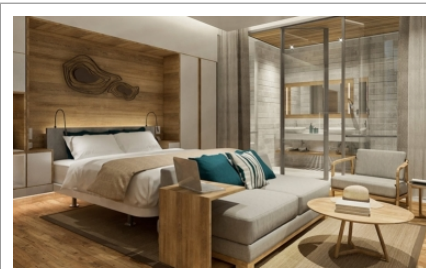
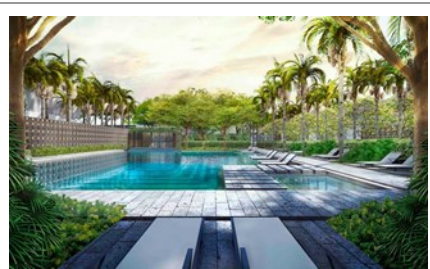
- [www.langhamhotels.com/en/locations/pacific](http://www.langhamhotels.com/en/locations/pacific)
- Marielle Ruiz at [langham@lemongrassmarketing.com](mailto:langham@lemongrassmarketing.com)



# Meliá Phuket Mai Khao

Thailand

Meliá Phuket Mai Khao, a wellness-inspired resort that fronts Phuket's longest stretch of sand has opened.



The resort is the second five-star property to be launched in Thailand under Spanish hotel group Meliá Hotels International.

It is located on Mai Khao beach and has eight acres of Phuket's northwestern coastline on the Andaman Sea.

The 30-suite and 70-villa resort is near to attractions including Mai Khao Marine Turtle Foundation, Sirinat National Park, and Wat Phra Thong temple.

- [www.melia.com/en/hotels/thailand/phuket/melia-phuket-mai-khao](http://www.melia.com/en/hotels/thailand/phuket/melia-phuket-mai-khao)
- Jade Bilowol at [jbilowol@balconymediagroup.com](mailto:jbilowol@balconymediagroup.com)

# Villa Nai 3.3, Dugi Otok

Croatia

Villa Nai 3.3, a member of Leading Hotels of the World®, is located on the remote island of Dugi Otok, in the Adriatic Sea.



The villa has been voted among the 'World's Best New Luxury Hotels 2021' by Luxury Travel Intelligence.

Located within the Kornati National Park, the adult only Villa Nai 3.3 offers eight rooms and suites, created by Croatian architect Nikola Bašić.

It is surrounded by 500-year-old olive groves which yields Nai 3.3 olive oil, so named because of the 3.3 snow days they receive a year, and which is essential for the bountiful harvest.

Nai 3.3 olive oil is used as the basis for dishes at the restaurant, with the menu using only the best ingredients from the island's farms, orchards, and surrounding Adriatic waters.

- [www.villanai.com](http://www.villanai.com)
- Becky Hampson at [becky@storringtonpr.com](mailto:becky@storringtonpr.com)



# Accommodation in Hachinohe

Japan

Awarded one of Conde Nast Traveller's Best Destinations for 2022, Hachinohe is a region rich in history and natural beauty in Japan's northeastern Aomori Prefecture.



The region, which is accessible via bullet train from Tokyo, offers rugged coastal trails, clear rivers flowing past farmhouses and lively markets.

Places to stay include :

## The Shin Mutsu Ryokan

Ryokans are Japanese-style inns found throughout Japan, and where guests can experience traditional Japanese lifestyle and hospitality.

This incorporates tatami floors, futon beds, Japanese-style baths and local cuisine

Some ryokan are small, family-run establishments with just a few rooms, while others have hundreds.

Originally a brothel in Hachinohe's historic red-light district, the Shin Mutsu Ryokan has been transformed into a traditional ryokan offering the chance to stay in a registered National Tangible Cultural Property.

[www.visithachinohe.com/en/places/shin-mutsuryokan/](http://www.visithachinohe.com/en/places/shin-mutsuryokan/)

## The Makiba Onsen

Onsens are natural hot springs fueled by volcanic activity and have long played an important role in Japan and Japanese culture.

Historically the Japanese used them to heal wounds and injuries, and in the countryside, local fishermen and farmers would spend their off seasons at the onsens to heal injuries and prepare themselves for future work.

This practice was known as toji, which means 'hot spring cure.'

Today they are seen as a therapeutic practice that helps restore both body and mind and sought out by travellers with a keen interest in wellness from all over the world.

The Makiba Onsen is known for its healing waters and culinary delicacies, such as local-raised Kuraishi beef and shamrock chick - a breed of poultry 'fit for an emperor'.

[www.visithachinohe.com/en/places/gonohemakibaonsen/](http://www.visithachinohe.com/en/places/gonohemakibaonsen/)

## Minshuku Shinto

Minshuku are family-operated, Japanese-style bed and breakfasts offering the chance to meet local families and experience traditional home life.

Minshuku are typically located around tourist areas such as hot springs, ski resorts and in the mountains, but can also be found in smaller countryside cities, towns or by the sea.

Located on the coast and near the surfing hot spots of Osuka, Kanehama and Okuri, Minshuku Shinto is a seaside inn on the Pacific Ocean.

## Glamping

Japan is frequently rated amongst the safest countries in the world, making it an ideal option for hikers and camping enthusiasts.

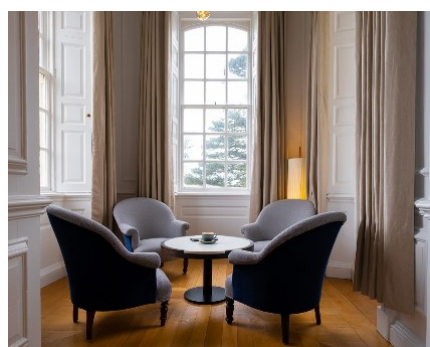
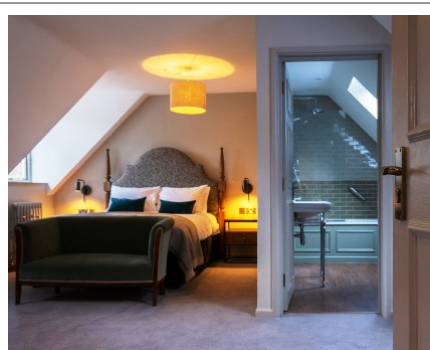
There is the chance to camp on the scenic Taneshi Coast Natural Lawn in northern Tohoku in yurts.

- [www.visithachinohe.com/en](http://www.visithachinohe.com/en)
- Rachel Santa Cruse at [rsantacruz@blackdiamond.co.uk](mailto:rsantacruz@blackdiamond.co.uk)

# Fowey Hall, Cornwall

UK

Luxury Family Hotels has unveiled Fowey Hall, the group's newly refurbished South Cornwall hotel.



The refurbishment project will include 24 new bedrooms, making 60 in all, a new outdoor swimming pool and a total relandscaping of the grounds and driveway.

Located above the sailing town of Fowey on the south Cornish coast, Fowey Hall enjoys views over the estuary and Fowey harbour.

The Fowey Hall restaurant serves up seasonal, locally sourced produce and there is a spa and indoor swimming pool.

The Grade II listed property is thought to have been the inspiration for Toad Hall in *The Wind in the Willow*.

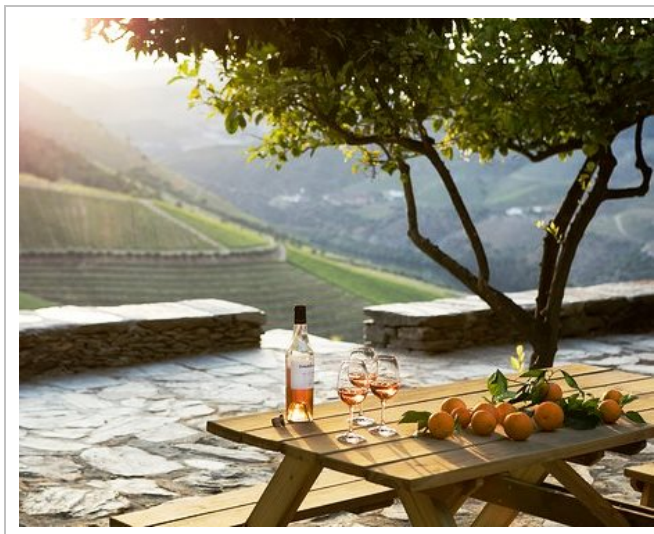
- [www.foweyhallhotel.co.uk](http://www.foweyhallhotel.co.uk) and [www.luxuryfamilyhotels.co.uk](http://www.luxuryfamilyhotels.co.uk)
- Marielle Ruiz at [marielle.ruiz@lemongrassmarketing.com](mailto:marielle.ruiz@lemongrassmarketing.com)



## Churchill's Gricha Vineyard House

Portugal

Churchill's Gricha Vineyard House has been named the top accommodation in Porto and Douro region by the 'Best of Wine Tourism' awards 2022.



Churchill's is one of the world's foremost boutique producers of premium Port and Douro wines.

The regional award was given by the Great Wine Capitals, a network that connects ten major world wine regions and annually distinguishes the network's best projects.

The *Best Of Wine Tourism Awards* celebrate innovation and excellence in wine tourism throughout the greatest wine regions in the world.

- [www.churchills-port.com/quinta-da-gricha/quinta-da-gricha-vineyard-house](http://www.churchills-port.com/quinta-da-gricha/quinta-da-gricha-vineyard-house) and [www.greatwinecapitals.com/best-of-wine-tourism-awards/quinta-da-gricha](http://www.greatwinecapitals.com/best-of-wine-tourism-awards/quinta-da-gricha)
- Vicky Major at [vicky@majorpr.co.uk](mailto:vicky@majorpr.co.uk)



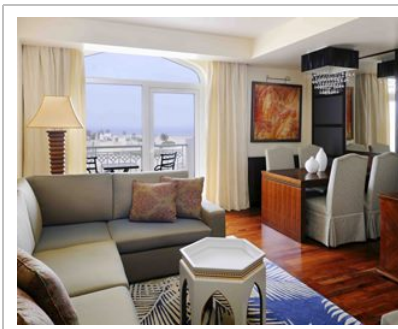
They also provide an opportunity for the wineries and wine tourism businesses in each region to gain exposure and recognition, while giving visitors a one-stop list of the best places to experience.

Churchill's is a 50-hectare vineyard, with its four-bedroom Gricha Vineyard House offering guests the chance to experience of life on a working Douro winery.

## Wyndham Garden Salalah Mirbat

Oman

Wyndham Hotels & Resorts has opened the 237-room Wyndham Garden Salalah Mirbat hotel in Mirbat, Oman.



The hotel is located on the oceanfront in Mirbat, a short drive away from Salalah, the third largest city in the Sultanate of Oman and the capital city of the Dhofar Province.

Mirbat is a culturally rich up-and-coming tourist destination, known for its white sand beaches and natural beauty.

The Wyndham Garden Salalah Mirbat is the group's fourth hotel in Oman and second under the Wyndham Garden brand.

- [www.wyndhamhotels.com](http://www.wyndhamhotels.com)
- Younes Elaouad at [younes@definitionagency.com](mailto:younes@definitionagency.com)



## Quirky UK accommodation from Premier Cottages

### Shepherds huts in Norfolk

Herdwick Hideaway has three Godwick Shepherds Huts are located in a small glade in rural Norfolk.

Pet-friendly and each property combines the latest mod cons with oak wooden floors, butler sinks and narrow boat wood burners.

[www.premiercottages.co.uk/cottages/godwicks-shepherd-huts](http://www.premiercottages.co.uk/cottages/godwicks-shepherd-huts)

### Harper's Cottage, Cornwall

Harper's Cottage is a five star dog-friendly cottage has its own private hot tub and is all on one level with a conservatory with underfloor heating and living room with a slate floor and oak beams.

It is convenient for the moors, the south coast of Looe, Fowey and Polperro as well as the dog-friendly beaches at Seaton and Downderry.

[www.premiercottages.co.uk/cottages/harpers-cottage/harpers-cottage](http://www.premiercottages.co.uk/cottages/harpers-cottage/harpers-cottage)

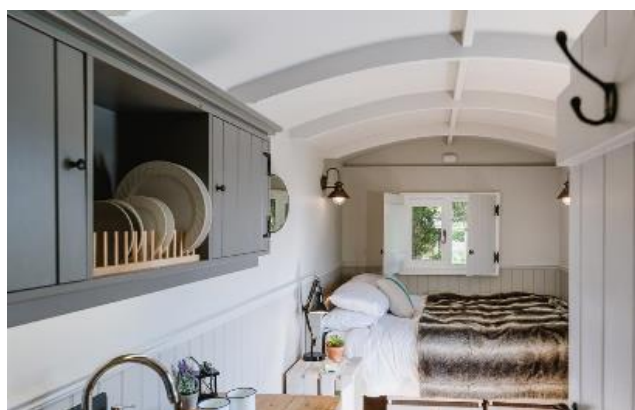
### Yurts at Uppergate Farm, Yorkshire

Located in 10 acres of secluded woodland, the craftsman-made Yurts at Uppergate Farm offer a break with a difference.

The two yurts have all mod-cons including a fully equipped kitchen and shower room, plus under-floor heating and a log stove.

They provide a base for exploring the Peak District National Park and Holme Valley.

[www.premiercottages.co.uk/cottages/glampingatuppergatefarm](http://www.premiercottages.co.uk/cottages/glampingatuppergatefarm)



Shepherds hut



Yurt



## Premier Cottages

(cont)



### Dannah Cottages, Derbyshire

Located in the Derbyshire countryside, Honeysuckle Cottage and Heather Cottage are two adults' only properties with their own Canadian Spa hot tubs in an enclosed garden.

The Peak District National Park and the town of Kirk Ireton are nearby.

[www.premiercottages.co.uk/cottages/dannah-cottages/](http://www.premiercottages.co.uk/cottages/dannah-cottages/)

### Hop Pickers Hideaway, Worcestershire

Hop Pickers Hideaway is a luxury Shepherds Hut with a secluded hot tub for two, king size bed, en suite shower underfloor heating, a wood burner.

It is a base for walking the Malvern Hills, visiting the Malvern theatre one of the many nearby National Trusts or English Heritage sites.

[www.premiercottages.co.uk/cottages/hop-pickers-hideaways/hop-pickers-hideaway](http://www.premiercottages.co.uk/cottages/hop-pickers-hideaways/hop-pickers-hideaway)

### Skylarks at Downs Barn Farm Cottages, Cornwall

Skylarks at Downs Barn Farm Cottages is a cottage for two.

It is close to a choice of restaurants and for taking in West Cornwall's key sights including St Michael's Mount, The Minack Theatre, St Ives and a range of sandy beaches and fishing coves.

[www.premiercottages.co.uk/cottages/downs-barn-farm-cottages/skylarks](http://www.premiercottages.co.uk/cottages/downs-barn-farm-cottages/skylarks)

- [www.premiercottages.co.uk](http://www.premiercottages.co.uk)
- Liz Blakeborough at [liz@blakeborough.com](mailto:liz@blakeborough.com)



### Swallow Barn, Devon

A dog-friendly cottage for two in the rolling Devonshire countryside, Swallow Barn has been converted from a grade II listed barn.

It is furnished farmhouse style with a super king sized bed, exposed beams, stripped floors and a woodburner.

The Dartmoor National Park is nearby.

[www.premiercottages.co.uk/cottages/swallow-barn/swallow-barn](http://www.premiercottages.co.uk/cottages/swallow-barn/swallow-barn)

## Bulletin box : Majorca's cycling routes



**Majorca's long cycling tradition is complemented by a warm, year-round climate and landscape of coastlines to mountains.**

Mallorca (Majorca) is one of Spain's Balearic Islands in the Mediterranean. It's known for beach resorts, sheltered coves, limestone mountains and Roman and Moorish remains.

Capital Palma has nightlife, the Moorish Almudaina royal palace and 13th-century Santa Maria Cathedral.

Stone-built villages include Pollença, with its art galleries and music festival, and hillside Fornalutx, surrounded by citrus plantations

Mallorca has launched videos about the cycling paths available on the island.

With over 2,071 kilometers of local roads and cycle paths along with 16 sustainable cycling routes available for keen cyclists, whether professional or amateur.

Athletes can also use Majorca's sports infrastructure to train for the island's annual events, from the Challenge Majorca triathlon to the UCI Track Legends cycling race.

### **Bays of Alcudia and Pollença**

The first route in the Alcudia and Pollença areas, Llogarets del Raiguer, is suitable for all abilities and runs through key landmarks such as the Albufera Natural Park, the medieval wall of Alcudia, Ses Fonts Ufanes river and the caves of Campanet.

Cyclists can enjoy the route to the Formentor Lighthouse, located at the northern point of the island.

The route to the Ermitas del Raiguer, starting in the tourist area of Can Picafort, offers extraordinary views of the island.

For the most experienced of cyclists, zooming down the iconic road Sa Calobra in the northern area of the Serra de Tramuntana Mountain range, is a rite of passage.

It is a highly difficult route with tall, winding slopes.

### **Calvià Coast**

Gliding along Calvià's coast by bicycle is a recommended route for amateurs or visitors who want to make the most of seeing all the island has to offer, as it connects some of the most visited villages in Majorca such as Peguera, Santa Ponça, and the port of Andratx.

The lighthouses of the Southwest point towards Sant Elm, located on the small island of La Dragonera, which is an essential visit for nature and history enthusiasts.

The route is suitable for all levels as it is mostly flat coastal sections through the municipalities of Palma, Andratx and Calvià, with a few gentle hills.

The *Churches of Poniente* route starts in Palmanova and offers a tour of chapels and small churches including the Sacred Stone that, according to tradition, was visited by King James I during the conquest of Majorca.

### **Bays of Cala Millor - Cala Rajada**

The eastern region of the island offers calm and tranquility on an idyllic cycling route through its traditional towns, such as Manacor, Felanitx and Santanyí.

The M2 route explores the region's lighthouses, including one of the island's most-visited, the Capdepera Lighthouse.

The route returns to Cala Millor through the Mallorcan countryside.

For those looking for a challenge, take in the island through viewpoints in the Llevant Mountains.

These can be found from the Belén hiking shelter and in the Sant Salvador Sanctuary, with the rewarding end of the journey at the famous Drach Caves in Porto Cristo.

### **Palma Beach**

The P1 route is the easiest from the city of Palma.

Cyclists of all abilities can discover UNESCO Sites of Cultural Interest throughout their journey, such as in the town of Pina, and regions of Sencelles and Santa Eugenia.

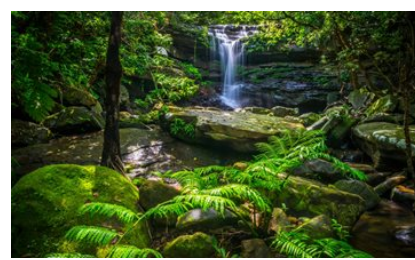
Visitors can also travel along the Midday lighthouses route, which takes them through unique island landscapes between the lighthouses of Cap Blanc and Cap de ses Salines.

The Sant Honorat, Gràcia and Cura sanctuaries are landmarks on a path for more experienced cyclists, who end their journey at the famous Sineu market for a well-deserved break.

- [www.mallorca.es](http://www.mallorca.es) at [www.mallorcatourismoseguro.com](http://www.mallorcatourismoseguro.com)
- Amy Layton at [pr@representationplus.co.uk](mailto:pr@representationplus.co.uk)



## Bulletin box : Okinawa, Japan



**Okinawa, which is Japan's southernmost prefecture, comprises 160 subtropical islands and has a year-round warm climate comparable to Hawaii, Miami and Cancun.**

Located three hours by air from Tokyo it offers a destination of natural beauty, with lush forests, blue waters with abundant coral and golden sands.

### **Okinawa to celebrate 50 years of reversion to Japan**

Okinawa is set to celebrate the 50th anniversary of reversion to Japan in 2022. A ceremony is set to take place on 15 May 2022 with commemorative events, performances and exhibitions of Okinawan arts and artefacts also due to happen.

In addition, a variety of cultural events will be held in parallel with this unique five-day event that will strengthen the bonds between participants from all over the world.

[www.wuf2022.com/en](http://www.wuf2022.com/en)

### **7th Worldwide Uchinanchu Festival**

The 7th edition of the *Worldwide Uchinanchu Festival*, held roughly every five years, is scheduled to take place from 30 October to 3 November 2022.

The festival, which is one of Okinawa's largest events aims to honour the achievements of Okinawan people from all over the world.

It will also look to deepen understanding of Okinawa's unique history and culture and bring people together to reaffirm their roots and identity to pass on to the next generation.

## Okinawa, Japan

(cont)



### Okinawa's whale watching season

From January to March, the oceans around Okinawa are home to an array of wildlife including humpback whales which can be spotted off the coast of Zamami Island.

The humpback whales travel all the way to the Kerama Islands from northern waters around Russia and Alaska. They are typically about 15 meters long and weigh roughly 30 tons!

They have large pectoral fins, which can grow up to five meters long (or about a third of their body length). Their tail fins resemble a fan, and help propel them gracefully through the water.

Tourist boats run daily from Okinawa and Kerama Island, offering visitors the truly unforgettable experience of glimpsing the whales in their natural habitat.

[www.visitokinawajapan.com/travel-inspiration/whale-watching-in-okinawa](http://www.visitokinawajapan.com/travel-inspiration/whale-watching-in-okinawa)

- [www.visitokinawajapan.com](http://www.visitokinawajapan.com)
- Laura Boo at [laura@humewhitehead.co.uk](mailto:laura@humewhitehead.co.uk)

### Accommodation

#### SHINMINKA Villa

Opened in November 2021, SHINMINKA Villa is one of the newest holiday properties in Iriomote Island, which has recently been added to the UNESCO World Heritage List for its 'outstanding universal value'.

The new Ryukyu-style private villa is designed with a 360-degree glass wall, offering views of the surrounding area.

[www.ise.festivalexpress.net/shinminka](http://www.ise.festivalexpress.net/shinminka)

#### Okinawa Prince Hotel Ocean View Ginowan

Okinawa Prince Hotel Ocean View Ginowan is set to open in April 2022.

It overlooks Ginowan Marina, one of Okinawa's largest yacht harbours, and within walking distance from the beachfront Ginowan Seaside Park and Tropical Beach.

The new hotel has 340 guest rooms and a terrace with ocean views.

The Okinawa capital, Naha, is 20 minutes by car and the resort town Mihama American Village is nearby.

[www.princehotels.co.jp/en/ginowan/grandopen](http://www.princehotels.co.jp/en/ginowan/grandopen)

#### Shinminka Villa Iriomote

#### Ryukyu Hotel & Resort Nashiro Beach

The new Ryukyu Hotel & Resort Nashiro Beach hotel, located in the fisherman city of Itoman on the southern tip of the Okinawa Island, will open in 2022.

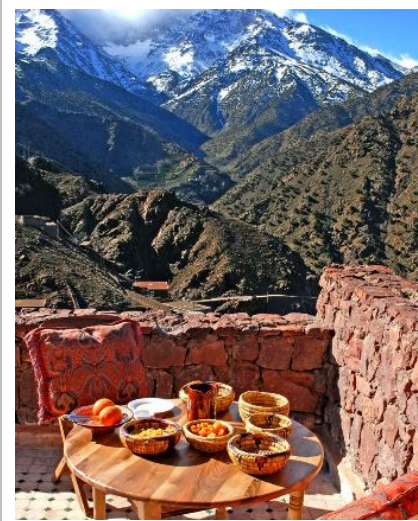
The new luxury resort will be located on a 50,000 square metre plot facing a sandy beach and emerald-green seas.

With two 11-storey towers and 443 guest rooms all with ocean views and Ryukyu-inspired interiors and artwork, the resort will offer nine restaurants and bars and six swimming pools, including a flowing water pool.

[www.nashiro.premierhotel-group.com/#hotelIn](http://www.nashiro.premierhotel-group.com/#hotelIn)



# One last thought : Kasbah du Toubkal, Morocco



**Kasbah du Toubkal, the Berber-run boutique hotel in Morocco's Atlas Mountains has been supporting the Imlil Village Association of several village communities in the Imlil Valley.**

The Kasbah du Toubkal, located at the foot of Mount Toubkal above the village of Imlil, charges a 5% surcharge for overnight stays, which is donated to the Imlil Village Association, which coordinates the development of projects in the village.

With the help of the association, a school for 80 children in a remote valley, a hammam and a waste disposal system have already been built.

The first ambulance in the region was also able to be used thanks to the donations, and flood protection has been strengthened.

Mike McHugo, who bought the dilapidated Kasbah and converted it into a hotel with the help of the local community, is also a co-founder of the *Education For All* project.

The initiative provides schooling for girls who are often denied the opportunity to attend, especially in rural regions, due to distances or financial limitations.

The project offers girls free accommodation in the school's own dormitories, and access to education and enables them to sustainably improve their standard of living in the local rural regions.



- [www.greenpearls.com/hotels/kasbah-du-toubkal/](http://www.greenpearls.com/hotels/kasbah-du-toubkal/)
- [press@greenpearls.com](mailto:press@greenpearls.com)

## International Travel Writers Alliance and AllWays Traveller



### **The International Travel Writers Alliance** *Making a difference in today's world*

The International Travel Writers Alliance is the world's largest association of professional travel journalists.



**Ashley Gibbins** is a professional travel journalist and Managing Director of the International Travel Writers Alliance.

- [www.itwalliance.com](http://www.itwalliance.com)
- [Ashley@itwalliance.com](mailto:Ashley@itwalliance.com)



### **AllWays traveller** *The world in one place*

AllWays traveller is the consumer travel magazine from the International Travel Writers Alliance



**Ann Mealor** is a professional travel journalist and Managing Editor of AllWays Traveller

[www.allwaystraveller.com](http://www.allwaystraveller.com)  
[Ann@itwalliance.com](mailto:Ann@itwalliance.com)